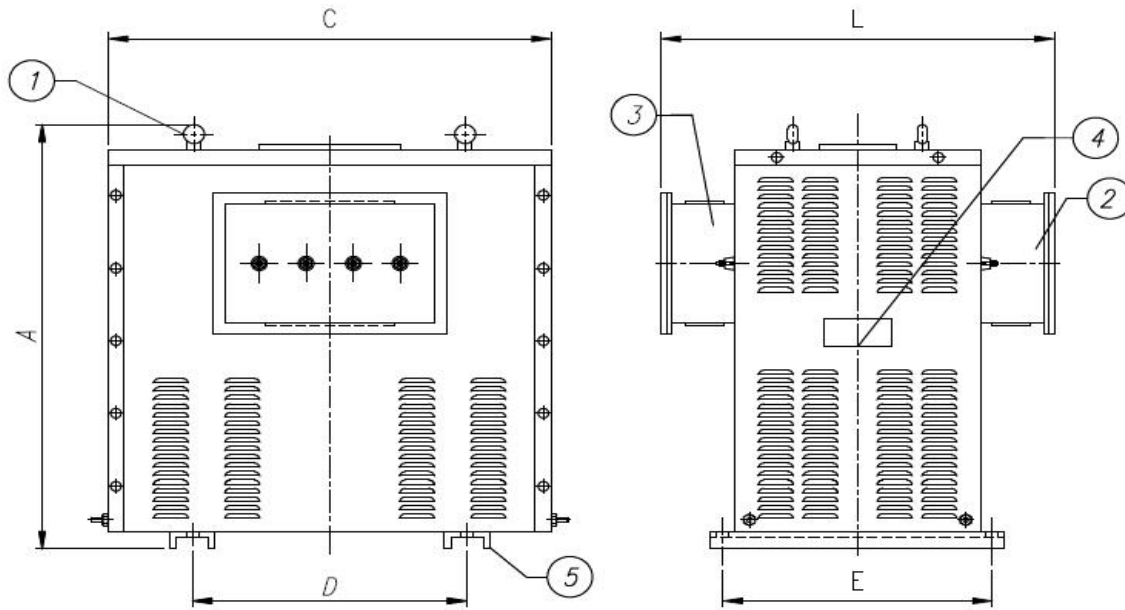




MODEL	TAI
Recommended for installation in industries, civil construction in general, naval, shopping malls, hospitals, etc.	

### CHARACTERISTICS

Power up to 3 MVA  
Degree of protection: IP00 to IP65;  
Classes of stress: 0.6kV and 1.2kV;  
Classes of temperature: A,B,F and H;  
Degree of protection: IP00 to IP65;  
Grain oriented silicon core;  
Maintenance-free;  
In compliance with the NBR10295 and IEC 60076-11 standards;  
It can be provided with a forced ventilation kit, protection against overcurrent and overload.



1 – Lug for suspension

2- B.T. Circuit breaker box w/ opening. Inf./sup.

3- A.T. Circuit breaker box w/ opening. Inf./sup.

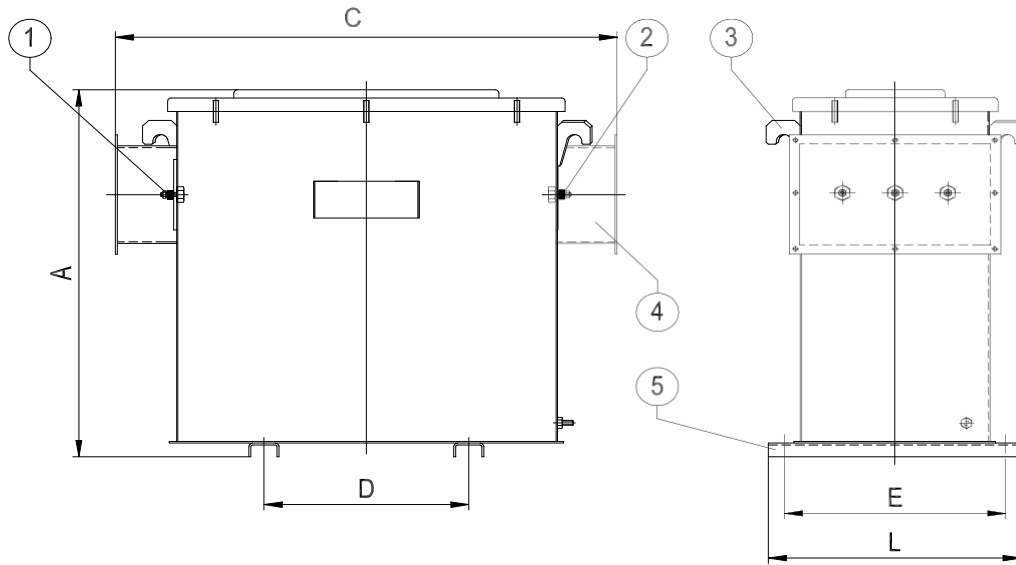
4- Identification plate

5- Mounting base

INCLUDED ACCESSORIES	OPTIONAL ACCESSORIES
Grounding Connector	Wheels
Mounting base	AT and BT connectors
Electrostatic Armor	Gloves in the flanges
Protection cases for the terminals (Flanges)	Temperature sensor
Hooks for Suspension	Digital temperature indicator with contacts
Internal panel for taps (when applicable)	
Viewing cover for access to the taps	

## DIMENSIONS AND APPROXIMATE WEIGHT

Tension up to 0.6 kV and current shorter than 800 A						
Ratings	Length.	Width	Height	Mounting (mm)		Weight
kVA	L - mm	W - mm	H - mm	D	E	kg
5	500	530	500	250	330	70
10	550	600	700	300	400	95
15	550	600	700	300	400	135
30	650	650	800	350	450	205
45	700	700	850	400	500	265
75	800	800	950	450	600	390
112.5	850	910	1100	500	650	500
150	1050	890	1120	560	640	620
225	1100	1060	1150	600	700	760
300	1325	1360	1150	690	925	925



- 1- Input terminals
- 2- Output terminals
- 3- Hook for suspension
- 4- Flanges
- 5- Mounting base

ACCESSORIES INCLUDED	OPTIONAL ACCESSORIES
Grounding Connector	Wheels
Mounting base	AT and BT Connectors
Electrostatic Armor	Gloves in the flanges
Protection cases for the terminals (Flanges)	Temperature sensor
Hooks for Suspension	Digital temperature indicator with contacts
Internal panel for taps (when applicable)	
Viewing cover for access to the taps	

### DIMENSIONS AND APPROXIMATE WEIGHT

Tension up to 0.6 kV and current shorter than 800 A							
Ratings	Length.	Width	Height	Mounting (mm)		Weight	
kVA	L - mm	W - mm	H - mm	D	E	kg	
5	620	350	550	220	310	85	
10	830	400	650	360	360	115	
15	830	400	650	360	360	160	
30	860	400	700	360	360	215	
45	910	420	760	380	380	300	
75	970	450	810	410	410	425	
112.5	1170	500	1020	450	450	540	
150	1320	600	1120	550	550	650	
225	1540	630	1200	580	580	830	
300	1820	750	1330	700	700	995	